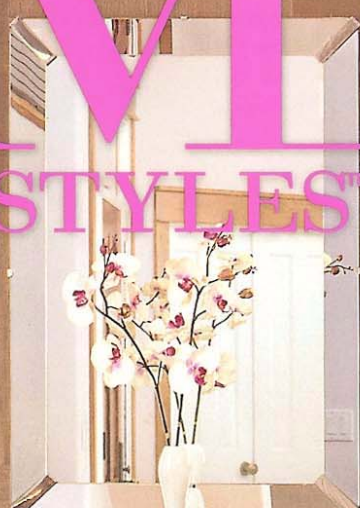


TOP 20 KITCHEN ESSENTIALS | EASY UPDATES FOR EVERY ROOM

COLORADO HOMES & LIFESTYLES™

RENOVATE & REMODEL

101 FRESH IDEAS AND REAL-LIFE SOLUTIONS



0 71486 03343 1
ColoradoHomesMag.com
March 2006

* HOW TO INCREASE YOUR HOME'S VALUE
* SECRET SOURCES FOR HISTORIC RENOVATION

HOME

MARCH.06



Interior design
Cassandra Lohr us
aqua accents for a pun
of color and visu
vibration in this mas
bedroom. She, alo
with architect Richa
Henry and gene
contractor Gary Ha
renovated a 19
Victorian in Salida ba
to its original charm. F
the complete story, tu
to "Restoring Integri
on page

74 All in the Family
Interior designer Andrea Schumacher creates a sophisticated haven for a young family

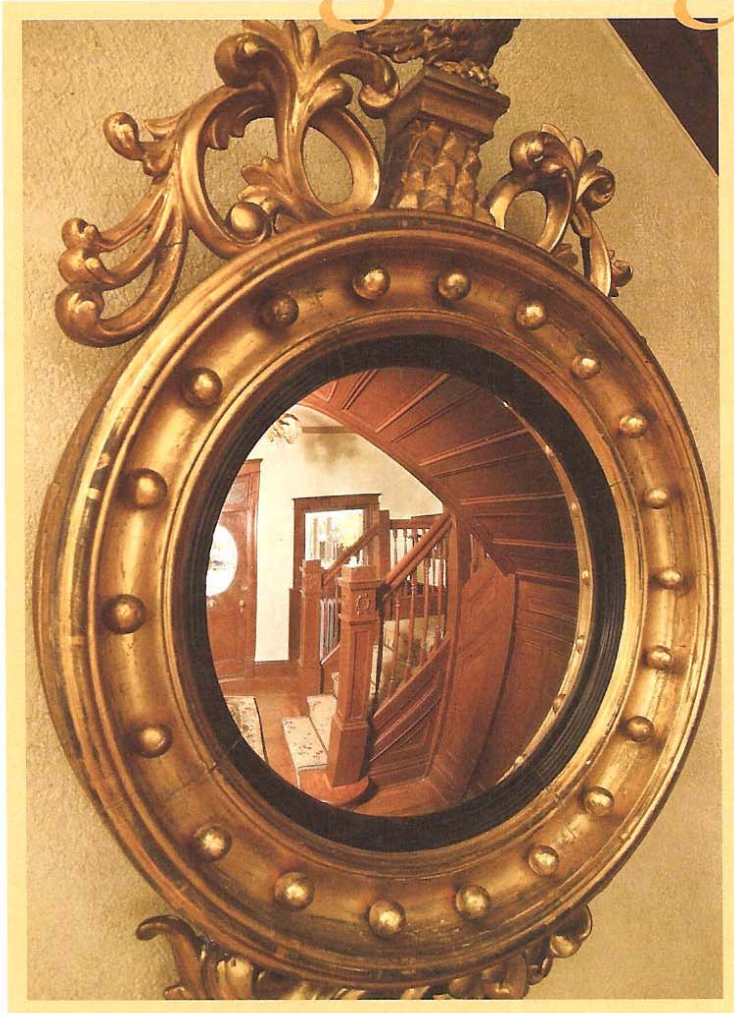
80 Restoring Integrity
A thoughtful collaboration brings a Salida Victorian back to its original 1905 splendor

86 Timeless Classic
A local design duo renovates a 1940s home to accommodate their modern family

96 Over the Garden Wall
A French country-inspired oasis pays homage to a Denver gardener's true passions

ON THE COVER: Photography by Kimberly Gavin. The dining room of a Boulder remodel is a study in sophisticated style. Instead of applying the Donghia grass in a conventional way, interior designer Andrea Schumacher cut the wall covering into 24-inch squares for a contemporary look. For the full story, turn to page 7

Restoring Integrity



A THOUGHTFUL COLLABORATION BRINGS A SALIDA VICTORIAN BACK TO ITS ORIGINAL 1905 SPLENDOR

STORY BY ANDREA BANKOFF

PHOTOGRAPHY BY RON RUSCIO

IT took nearly 100 years to dull the gloss of a charming Victorian home in Salida, but it has now proudly reaffirmed its heritage.

Kurt and Kathy Westman, who have owned ranch property for 15 years in Howard, Colorado, a rural area located about 15 miles from Salida, had every intention of living on the ranch and even restored an old cabin on the land. But, as Kurt explains, that was before the couple fell in love with the historic town of Salida. "Salida is loaded with personality, stunning scenery, great restaurants, a great arts community, and a convenient proximity to Monarch ski area," he says.

Shortly after purchasing a Queen Anne-style Victorian in the heart of town, the Westmans hired Denver- and Aspen-based designer Cassandra Lohr, architect Richard Henry, and general contractor Gary Hand to begin the process of restoring and renovating this diamond in the rough. "Except for a poorly 'remodeled' master bath, a kitchen that needed to be completely renovated, and a discordant carriage house addition, the house still had its original good bones," says Westman. "It was built in approximately 1905, and luckily the previous owners hadn't changed the basic architectural structure. We just had to remove all the 'modernization.'" ▷

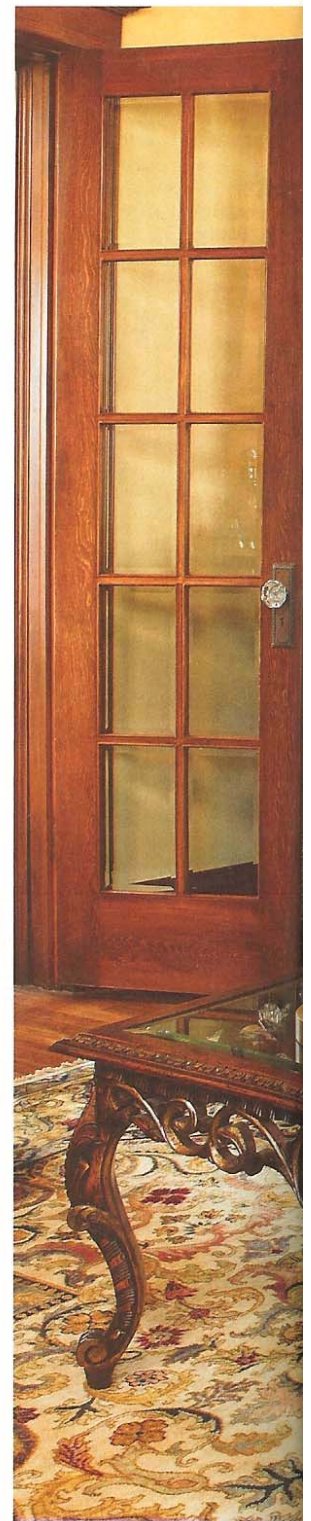
"For the dining room, as in the rest of the house, I chose the rug first and let it dictate the color palette," says Lohr. The elegant draperies, swagged on rods, cascade and puddle graciously to the floor. A buttery gold faux finish on the walls softens everything and connects the room to the rest of the house. CHANDELIER: Schonbek, JJ&S Lighting, Denver Design District (DDD), (303) 777-1007. RUG: Floor Coverings by CPA, DDD, (303) 722-4700.





(above and opposite page) Each antique was selected to achieve an elegant look. To embellish the golden silk velvet sofa, Lohr had the cushions embroidered in red. She discovered the rare *trumeau* mirror that now hangs over the sofa, and knew right away that it was perfect for her clients. "Parts of the mirror encompass beautiful oil paintings, so it really is a work of art that adds dimension and beauty," she says of her find. SOFA: The Collection by Cassandra Lohr, (303) 377-7121. TABLE: Gustav Carroll, Egg & Dart, DDD, (303) 744-1676.

(right) The lady's dressing room showcases an elaborately carved and custom-detailed vanity with burlwood from The Collection by Cassandra Lohr, (303) 377-7121. RUG: Shaver-Ramsey, (303) 320-6363.



DESIGN DETAILS

INTERIOR DESIGN
CASSANDRA LOHR,
Cassandra Lohr Designs
(303) 377-7121

ARCHITECT
RICHARD HENRY
Richard Henry Architecture
(303) 293-3300

GENERAL
CONTRACTOR
GARY HAND
Carpentry By Hand
(719) 539-4293



As time progressed, however, the renovation became more extensive than originally planned. The team built a new foundation, repointed all the brick, and restored the original stained glass. A modern carriage house addition was made historically correct by sandblasting the brick exterior and adding authentic period details, trim and embellishments. The third-floor attic was transformed into a guest suite, resplendent with antiques and beautiful period fabrics. And, a period-style gazebo was built to visually connect the carriage house with the main residence.

"The Westmans refused to compromise on the historical integrity of the details," says architect Richard Henry. "We restored the woodwork, and Gary Hand found the original profiles for other elements, such as

doors, that had been changed." Because the homeowners were committed to creating authentic interiors, Hand and Lohr researched Victorian hardware and replaced all the hinges and switch plates with antique decorative iron and beautiful, stamped-metal versions.

Once the architectural details were in place, Lohr began to renovate the interiors to maintain a "historically correct" ambience. "Originally the owners wanted the home to be filled with authentic furnishings," explains Lohr. "I encouraged them to shy away from using all antiques because a home designed entirely in period pieces would make it seem like a museum. You have to select your antiques thoughtfully, so you get an elegant feeling rather than a heavy interior. Using only antiques would lessen the importance of each piece." ▷



Because of the way the home was constructed in 1905, architect Richard Henry had to work with the shallow floor framing in the bath. "We had to figure out a way to maintain the structural integrity and install the plumbing lines," says Henry. "This is always a challenge in a historical renovation." ALL FIXTURES: Eurobath + Tile, (303) 298-8453.



Q&A

General Contractor Gary Hand of Carpentry by Hand shares historical renovation tips:

CH&L: You were responsible for researching authentic hardware for the Westman home. Any hints about how to replace hardware and other details that have been lost in prior remodeling efforts?

HAND: Through Van Dyke's Restorers mail order catalog, vandykes.com, one of the best for restoration, I was able to match up the old, existing door hardware on the interior doors with reproductions that looked almost exactly like the originals.

CH&L: What else did you do to recreate the grandeur of the home as it was when it was new?

HAND: The Westmans were committed to a totally authentic renovation. On the first floor, for example, there was some wainscoting that one of the previous owners had removed from the stairwell. I was able to reproduce this detail and bring the stairwell back to its original grandeur.

CH&L: What about reproducing the paint colors?

HAND: It was important to find painters and other sub-contractors who are perfectionists. To match up the colors on the new doors, trim and stairwell, we spent a lot of time blending the original colors and finishes. Shellac and varnishes, which were used at the turn of the

century, create distinct hues in wood, and we were able to use new products and state-of-the-art paints to match these hues.

CH&L: Any "dos" or "don'ts" of historical renovation?

HAND:

- Have somebody on your team thoroughly research the period.
- Assemble a team that is skilled and committed enough to take the time to painstakingly reproduce any of the original details that still exist in the home.
- Be willing to search the country to find period items, down to the reproductions of hinges and switch plates.
- Ask for recommendations on the best plumbers or electricians.

CH&L: Could you provide our readers with some good resources to find the sorts of things they might need in a historical renovation?

HAND: Van Dyke's Restorers out of South Dakota are very helpful and have an amazing selection. For Victorian homes, other places to look to include San Francisco Victoriana, (415) 648-1313, and Beronio Lumber, (415) 824-4300.

To give the eyes a rest, Lohr continued the soft buttery gold faux finish on the walls in the master bedroom, which picked up some of the colors in the damask bedding. Aqua accents add a punch of color and visual vibration to the room. The armoire is antique, and Lohr wisely mixes it with reproductions, comfortable upholstery and a reproduction Victorian ceiling fan. CHAIR: Edward Ferrell, Nielsen Metiér, DDD, (303) 722-0072. ANTIQUE NIGHTSTAND: Pine Woodworks, (303) 744-7499.



The designer also wanted the Westmans to be comfortable, "to truly use the rooms." So she combined antiques with some reproduction and custom-built pieces. "We mixed in plush new rugs with a palette of soft butter-gold, red, and some aqua, which are consistent with the colors of the period," she says. "The Victorians loved pattern on top of pattern, which can sometimes desensitize the eye. To prevent that, we chose to put most of the pattern on the floors with rugs or accent pillows."

Lohr also researched period mosaic and tile patterns for the master bathroom, added marble floors with decorative accents that might have been found in a late-19th century home, and chose ceramic tile and other materials that looked authentic. "The Victorians loved color, so I

chose the accents and tile in blue-green and sea foam tones and installed a reproduction sink and light fixtures," explains Lohr. "But the Westmans also have all of the modern conveniences, including a state-of-the-art shower."

Finally, the designer turned the original carriage house into a media room with a rare Tiffany lamp and an L-shaped sofa. "This is another space where we added some new elements, like the upholstery," she explains. "Who wants to sit on a stiff antique settee and watch television?"

The homeowners contributed personal touches, traveling all over the country to find special pieces and works (*continued on page 125*)

(continued from page 85)

of art. "We emailed images of antiques we were interested in to Cassandra for her approval," Westman explains. They also bought local art from the period, including work by esteemed 19th-century Colorado painter Charles Partridge Adams, who spent two summers living and painting in a little town outside of Salida.

The historic house has survived many facelifts, but it now lies in the hands of owners who love and care for it. Kathy and Kurt Westman's careful collaboration with such a skilled and capable team was just the right touch to restore a turn-of-the-century home into a timeless space that vibrates with unparalleled character. □ See more resources below.



@ ColoradoHomesMag.com
go online for dramatic before photos

The front of this home is a typical Queen Anne style with an asymmetrical façade to the street that provides a feeling of individuality and expression. The steeply pitched roof and turrets and wraparound front porch are also trademarks of this style. Several windows and stained glass were restored to their original glory. The color palette of the exterior and all the trim was researched, and after many renderings, this authentic color combination was chosen.

SOURCES

Salida, (719) 539-4880; *Gazebo*: Keith Gotschall, Salida, (719) 539-4231; *Paint Contractor*: P&G Painting Co., Salida, (719) 539-4520; *HVAC*: Rhodes & Doyle, Salida, (719) 539-3871; *Electrical*: Arkansas Valley Electric, Howard, (719) 942-3518.

DINING ROOM p. 81

Chairs: Re-upholstered antiques, Jim Thompson, Egg & Dart, Denver Design District (DDD), (303) 744-1676; *Antique ormolu French bouillotte lamps with drop crystals (red and gold shades)*: circa 1860, Black Tulip Antiques, Denver, (303) 777-1370; *Crystal chandelier with matching drop crystal candlesticks*: Schonbek, JJ&S Lighting, DDD, (303) 777-1007; *Rugs*: Floor Coverings by CPA, DDD, (303) 722-4700.

PARLOR p. 82

Sofa: Custom made with down-wrapped cushions, The Collection by Cassandra Lohr, (303) 377-7121; *Square coffee table*: Gustav Carroll, Egg & Dart, see above; *Pair of chairs with carved arms, apron and legs*: Edward Ferrell, Nielsen-Metiér, DDD, (303) 722-0072; *Floor lamp*: John Richards,

Whitney Evans, DDD, (303) 777-1886; *Gold gilt occasional tables with mirrored tops*: Lifestyle Antiques, Summerland, (805) 969-5474; *Rug*: Floor Coverings by CPA, see above; *Drapery*: Silk marine taffeta: Nomi, John Brooks, DDD, (303) 698-9977.

DRESSING ROOM p. 82

Vanity: The Collection by Cassandra Lohr, see above; *Upholstered chaise-and a-half*: Stanford Furniture, Whitney Evans, see above; *Velvet*: Beacon Hill, Oliver Walker & Company, DDD, (303) 744-1404; *Round rug*: Shaver-Ramsey, Denver, (303) 320-6363; *Antique Dutch marquetry secretaire*; circa 1820, Eron Johnson Antiques, Denver, (303) 777-8700.

MASTER BATH p. 84

Tile: Sonoma Tilemakers, Decorative Materials International, DDD, (303) 722-1333; *Fixtures, tub, shower, sink and toilet*: Eurobath + Tile, Denver, (303) 298-8453; *Bench*: The Collection by Cassandra Lohr, see above.

MASTER BEDROOM p. 85

Headboard: Jeffco, Whitney Evans, see

above; *Fabric on headboard*: Lee Jofa, DDD, (303) 733-3470; *Bench*: The Collection by Cassandra Lohr, see above; *Arm chair*: Edward Ferrell, Nielsen-Metiér, see above; *Antique occasional table*: Eron Johnson Antiques, see above; *Antique nightstands with marble tops*: circa 19th Century, Pine Woodworks, Denver, (303) 744-7499.

TIMELESS CLASSIC



Interior Design: Debra Toney, AIA Associate, Debra Toney Residential Design and Development, Denver, (303) 399-2677, debratoney.com; *Architect*: Mark Adcock AIA, Debra Toney Residential